

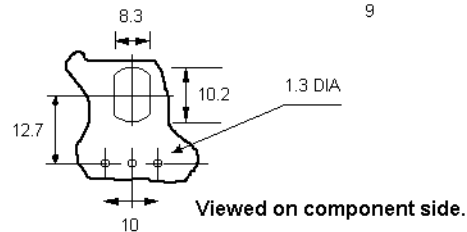
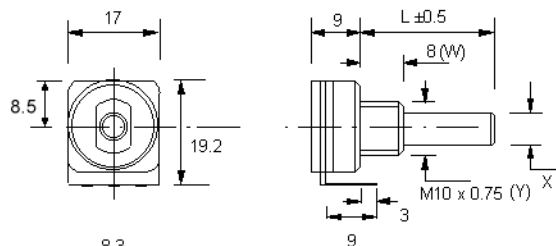
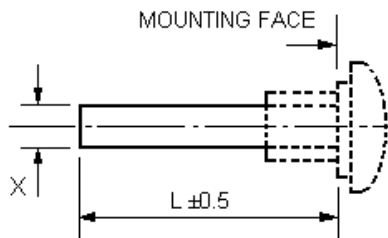


Entsprechend RoHS
(EG2002/95/EC)



ALPHASTAT 16 LT16ECO

Ausführung / construction: ISO, angewinkelt
 Welle / shaft: \varnothing 4 mm, L = 30 mm
 \varnothing 6 mm, L = 35 mm
 Buchse / bushing: M10 x 0,75
 Drehbereich / rotation angle: 300°
 Printausführung / for printed circuits (PC)
 Conductive Plastic



Type	Desc. (X)	L (mm)
F21	\varnothing 4 mm	14 - 35
F1	\varnothing 6 mm	14 - 65

	4 mm Welle F21-PC			6 mm Welle F1-PC			4 mm Welle F21-OW			6 mm Welle F1-OW		
	lin.	poslog	neglog	lin.	poslog	neglog	lin.	poslog	neglog	lin.	poslog	neglog
100 R												
220 R												
470 R												
1 k	7472			7552								
2,2 k	7473			7553								
4,7 k	7474	7487		7554	7567							
10 k	7475	7488		7555	7568							
22 k	7476	7489		7556	7569							
47 k	7477	7490		7557	7570							
100 k	7478	7491		7558	7571							
220 k	7479	7492		7559	7572							
470 k	7480	7493		7560	7573							
1 M	7481			7561								
2,2 M												
4,7 M												

* lagermäßige Ausführungen \\ * in stock