

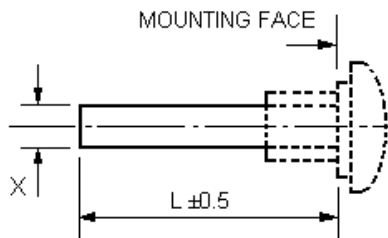


Entsprechend RoHS
(EG2002/95/EC)

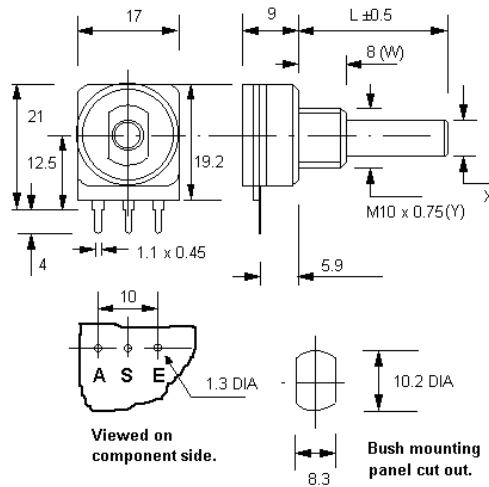


ALPHASTAT 16 PC16ECO

Ausführung / construction: ISO
 Welle / shaft: \varnothing 4 mm, L = 30 mm
 \varnothing 6 mm, L = 35 mm
 Buchse / bushing: M10 x 0,75
 Drehbereich / rotation angle: 300°
 Printausführung / for printed circuits (PC)
 Conductive Plastic



Type	Desc. (X)	L (mm)
F21	\varnothing 4 mm	14 - 35
F1	\varnothing 6 mm	14 - 65



	4 mm Welle F21-PC			6 mm Welle F1-PC			4 mm Welle F21-OW			6 mm Welle F1-OW		
	lin.	poslog	neglog	lin.	poslog	neglog	lin.	poslog	neglog	lin.	poslog	neglog
100 R												
220 R												
470 R												
1 k	7112			7192								
2,2 k	7113			7193								
4,7 k	7114	7127		7194	7207							
10 k	7115	7128		7195	7208							
22 k	7116	7129		7196	7209							
47 k	7117	7130		7197	7210							
100 k	7118	7131		7198	7211							
220 k	7119	7132		7199	7212							
470 k	7120	7133		7200	7213							
1 M	7121			7201								
2,2 M												
4,7 M												

* lagermäßige Ausführungen \\ * in stock