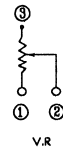
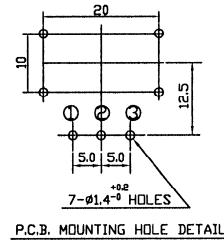
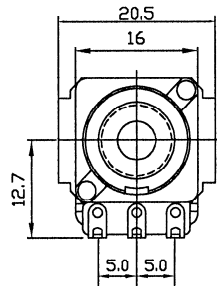
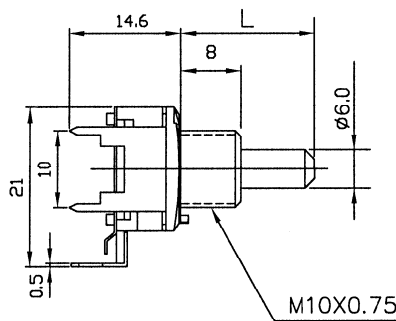


Ausführung / construction: Mono mit Tragkäfig / single turn with bracket  
 Welle / shaft:  $\varnothing$  6 mm, L = 30 mm  
 Buchse / bushing: M10 x 0,75  
 Drehbereich / rotation angle:  $270^\circ \pm 5\%$   
 Belastbarkeit / rated wattage: lin. 0,2 W / log 0,05 W

### ALPHASTAT 16 63250-216XX

Printausführung / for printed circuits (PC)  
 Kontakte: SPCC, kalt gewalzter Stahl, vernickelt / Cold rolled steel sheets, nickel plated



	Standard 63250-21600/—			Mittenrast / center click 63250-21610/—			Rast 11 / 11 clicks 63250-21620/—			Rast 41 / 41 clicks 63250-21640/—		
	lin.	poslog	neglog	lin.	poslog	neglog	lin.	poslog	neglog	lin.	poslog	neglog
<b>1 k</b>	3162			3202			3242			3282		
<b>2 k</b>		3175	3190		3215	3230		3255	3270		3295	3310
<b>2,5 k</b>	3163	3176		3203	3216		3243	3256		3283	3296	
<b>5 k</b>	3164*	3177	3192	3204	3217	3232	3244	3257	3272	3284	3297	3312
<b>10 k</b>	3165*	3178	3193	3205	3218	3233	3245	3258	3273	3285	3298	3313
<b>25 k</b>	3166	3179		3206	3219		3246	3259		3286	3299	
<b>50 k</b>	3167	3180	3195	3207	3220	3235	3247	3260	3275	3287	3300	3315
<b>100 k</b>	3168	3181	3196	3208	3221	3236	3248	3261	3276	3288	3301	3316
<b>250 k</b>	3169	3182		3209	3222		3249	3262		3289	3302	
<b>500 k</b>	3170	3183		3210	3223		3250	3263		3290	3303	
<b>1 M</b>	3171	3184		3211	3224		3251	3264		3291	3304	

\* lagermäßige Ausführungen (unverbindlich) \\ \* in stock (non-binding)