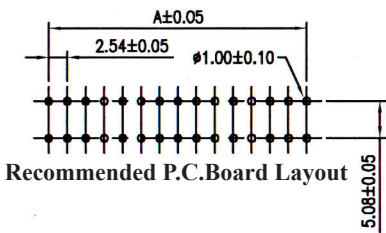
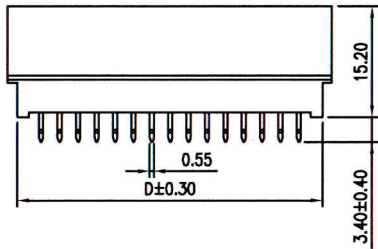
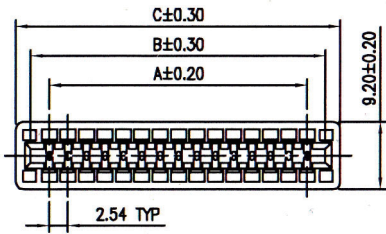
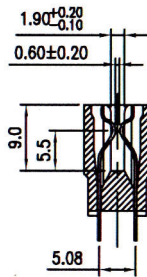


2.54MM CARDEDGE SLOT CONNECTOR WITHOUT KINKED CONTACTS



Recommended P.C.Board Layout



SPECIFICATIONS

Current Rating: 3.0 Amp

Dielectric Withstanding: 1000V AC

Insulation Resistance: 5000MΩ Min

Contact Resistance: 20mΩ Max.

Operating Temperature: -55°C to +85°C

MATERIALS

Insulation Material: P.B.T, UL94V-0

Contact Material: Copper Alloy

All materials must be RoHS compliant.

No. of Contacts	Dimensions(mm)				No. of Contacts	Dimensions(mm)			
	A	B	C	D		A	B	C	D
06	5.08	10.16	14.22	11.62	66	81.28	86.36	90.42	87.82
08	7.62	12.70	16.76	14.16	68	83.82	88.90	92.96	90.36
10	10.16	15.24	19.30	16.70	70	86.36	91.44	95.50	92.90
12	12.70	17.78	21.84	19.24	72	88.90	93.98	98.04	95.44
14	15.24	20.32	24.38	21.78	74	91.44	96.52	100.58	97.98
16	17.78	22.86	26.92	24.32	76	93.98	99.06	103.12	100.52
18	20.32	25.40	29.46	26.86	78	96.52	101.60	105.66	103.06
20	22.86	27.94	32.00	29.40	80	99.06	104.14	108.20	105.60
22	25.40	30.48	34.54	31.94	82	101.60	106.68	110.74	108.14
24	27.94	33.02	37.08	34.48	84	104.14	109.22	113.28	110.68
28	33.02	38.10	42.16	39.56	86	106.68	111.76	115.82	113.22
30	35.56	40.64	44.70	42.10	88	109.22	114.30	118.36	115.76
32	38.10	43.18	47.24	44.64	90	111.76	116.84	120.90	118.30
34	40.64	45.72	49.78	47.18	92	114.30	119.38	123.44	120.84
38	45.72	50.80	54.86	52.26	94	116.84	121.92	125.98	123.38
40	48.26	53.34	57.40	54.80	96	119.38	124.46	128.52	125.92
42	50.80	55.88	59.94	57.34	100	124.46	129.54	133.60	131.00
44	53.34	58.42	62.48	59.88	102	127.00	132.08	136.14	133.54
46	55.88	60.96	65.02	62.42	106	132.08	137.16	141.22	138.62
48	58.42	63.50	67.56	64.96	108	134.62	139.70	143.76	141.16
50	60.96	66.04	70.10	67.50	110	137.16	142.24	146.30	143.70
52	63.50	68.58	72.64	70.04	112	139.70	144.78	148.84	146.24
54	66.04	71.12	75.18	72.58	114	142.24	147.32	151.38	148.78
56	68.58	73.66	77.72	75.12	116	144.78	149.86	153.92	151.32
58	71.12	76.20	80.26	77.66	118	147.32	152.40	156.46	153.86

ORDERING INFORMATION:

P/N 254 SL - XXX S B
 1 2

1. CONTACT TYPE:
"SL" W/O KINKED CONTACTS
2. NO. OF CONTACTS:
006 through 118
(Excepting 026, 036, 062, 064, 098)